



Assessment Web Application: Characteristics and Benefits to the Institutional Effectiveness Process

Divya Bhati, Ph.D.

Patrice Lancey, Ph.D.

Carlos Martinez

Office of Operational Excellence and Assessment Support

University of Central Florida



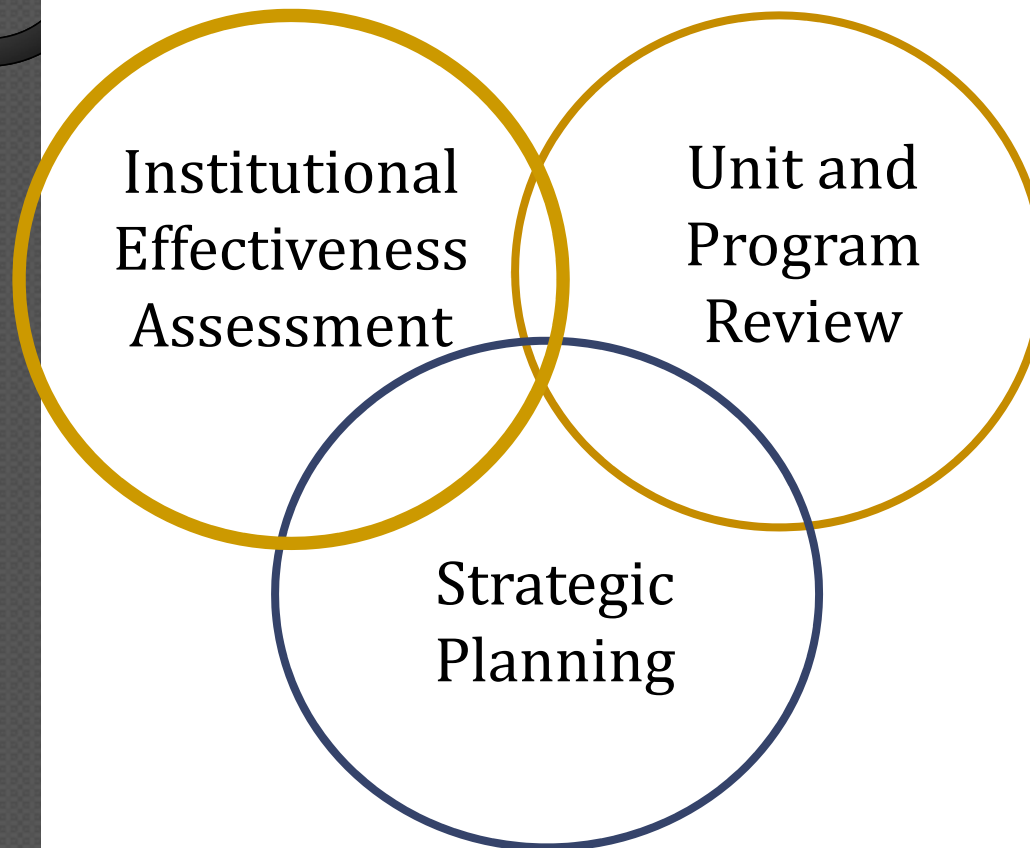
Overview

- UCF Institutional Effectiveness assessment process
- Modeling the business process
- UCF Web application
 - Structure & design
 - Functionality
 - Benefits
 - Challenges

University of Central Florida

- Basic Carnegie classification: research universities (high research activity)
- UCF also achieved Carnegie Community Engagement Classification
- 2nd largest university in U.S. with 56,337 students
- 10 regional campuses and numerous other instructional sites
- 12 colleges, including a medical college
- 216 degree programs (91 bachelor's, 92 master's, 3 specialist, 29 doctoral, 1 professional)

UCF's Integrated Approach to Institutional Effectiveness



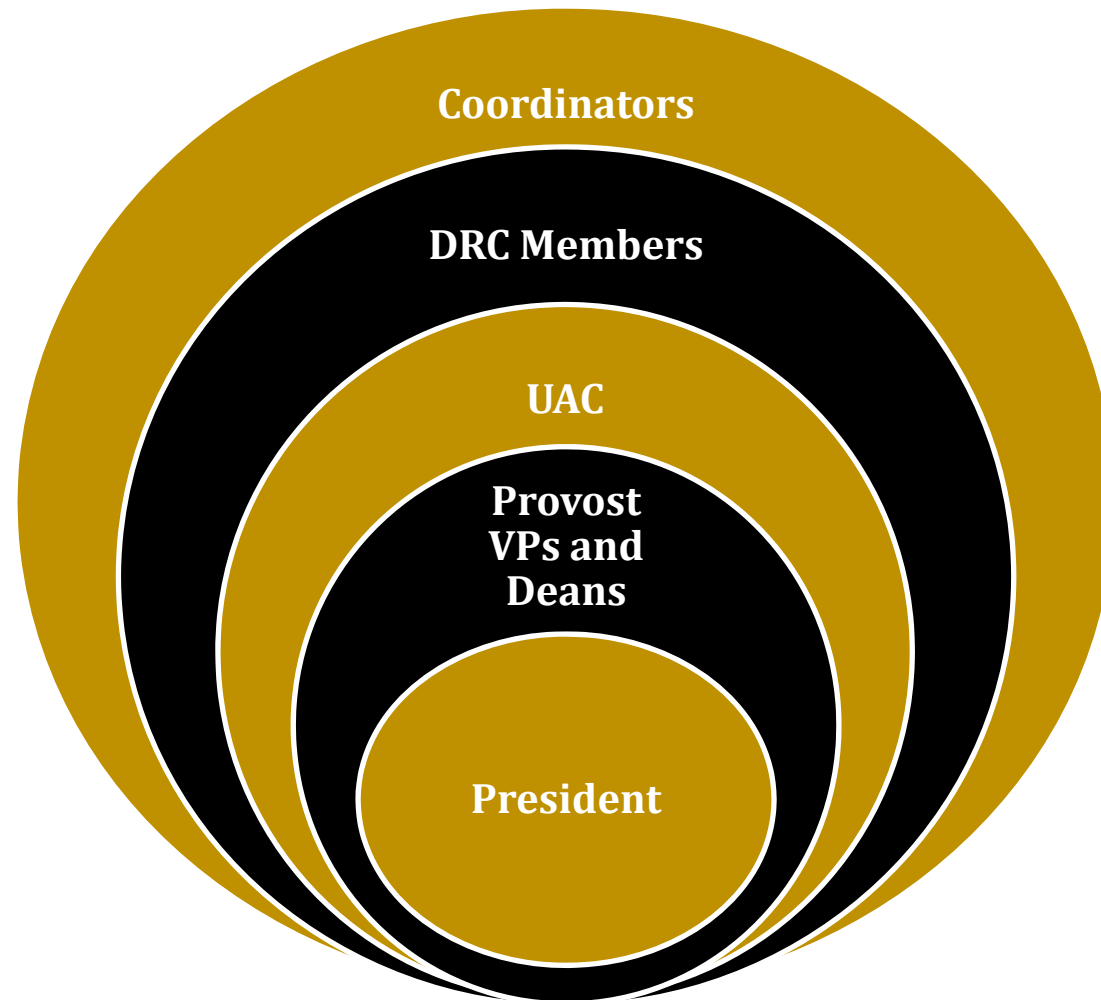
Linkages

- share information
- inform budget process

Differences

- different cycles
- additional data elements
- different purposes
 - continuous improvement
 - evaluation
 - planning

Assessment Leadership



Assessment Scope and Schedule

- 354 programs and units report
 - Year round process
 - Centralized online reporting system
 - Ongoing reviews and feedback by DRC
- Over 800 users involved in conducting assessment [organization chart](#)
- September – Coordinators submit final results and plans
- October – DRCs review results and plans
- November to December – UAC final review

Closing the Loop

- Proposed or actual changes based on these results
 - academic process
 - curriculum
 - assessment plan for next cycle
 - changes to operations
- A new assessment plan
 - include measures of impact of these changes



Stages Leading to Institutional Effectiveness Assessment Web Management System



Assessment Process: The *Mesozoic Era* at UCF

- Loads of paper documents
- Manual submission of assessment plans
- No common assessment plan template
- No structured review of plans
- Little faculty and staff involvement
- Difficult to manage or use

[Example](#)